

Measurements of the wind energy resource in the Latvia

P. Shipkovs^{1*}, V. Bezrukov¹, V. Pugachev¹, Vl. Bezrukovs², V. Silutins³

¹ Institute of Physical Energetics (IPE), Riga, Latvia,

² Ventspils University College (VUC), Ventspils, Latvia

³ Encom Ltd, Riga, Latvia

* Corresponding author. Phone/Fax: +37167553537, e-mail: shipkovs@edi.lv

Abstract: In the Baltic countries interest to the renewable energy is growing. Government support and availability of large unpopulated areas on the coast makes attractive use of these lands for the placement of large wind power plants (WPP). For successful implementation of planned projects reliable information about distribution of the resource of wind energy is needed. Researches in this area are carried out by collaboration IPE with VUC. The paper presents the results of years-long observations on the density fluctuations of wind energy at heights of 10 to 60 m in the area in the Baltic Sea coast in the north and the south-west of Latvia. The velocity observations from 2004 till 2010 years have been obtained by measurements complex of the LOGGER 9200 Symphonie type. The results presented in the form of tables, bar charts and graphs. The graphs of seasonal fluctuations of wind speed have been obtained for the heights up to 60 m by measurements over the period of 2007 – 2010. The histograms have been composed for the relative frequency of repetition of wind speed. The wind speed distribution on heights up to 60 m was analysed and coefficients of approximating functions for the two areas with different terrain types were calculated. Extrapolation results of the distribution curves of wind velocity and density mean values on heights up to 150 m were shown.

Keywords: Wind energy, Measurement of wind speed, Wind speed approximation at 150 m, Wind energy density fluctuation, Acoustic noise level

1. Introduction

The availability of large unpopulated coastal areas and the developed infrastructure of electric power networks in the Baltic countries make attractive the use of these areas for siting large wind power plants (WPP). In the coastal territories of western Estonia, in the Ida-Virumaa region at the site of the former shale quarries the construction of WPPs is planned whose power will be over 600 MW. Further it is also planned to start offshore WPP construction. In Latvia, projects on the construction of 450 MW coastal WPPs have been approved; there are also projects as to the construction of a 900 MW wind park offshore. In Lithuania, the total power of wind parks in 2010 has made up 200 MW, with 1000 MW to be reached; after 2020 it is planned to start works in the offshore territories. In Latvia, planned preparation of the infrastructure is going on: construction of thermal power plants and of the transmission line “Kurzeme Arc” (by 2017), which would allow for construction of a ~900 MW WPP in the sea near Liepaja (by 2020). The governmental support is confirmed by working out administrative and legislative regulations as well as by creating a favourable tariff policy that would encourage the construction of large WPPs. At the same time, for the territory of the Baltic countries there are no databases of long-term measurements of wind speeds at different heights that can be used to compose an atlas of wind energy resource distribution in this region. The systematic long-term measurements of wind speeds in Latvia since 2007, taking into account the wind speed distribution on several levels, have been carried out in the two sites: on the south-west coast of the Baltic Sea in the Ventspils region and on the north of the country in the Ainaži region in 35 km from the shore [1]. The places where the metrological masts are situated are shown on the map of Fig. 1 by black stars. On the same map, by dark grey colour the regions are indicated which, according to the forecasts of meteorological observations and being territorially remote from populated areas, could be promising for siting WPPs.



Fig. 1. The coastal map of Baltic countries with the places of interest for siting WPPs indicated.

2. Research on the cyclic behaviour of wind energy fluctuations

The measurements of wind speed were carried out using certified sensors of wind speed of the NRG #40 type and sensors indicating the direction of the air stream of the NRG #200P type. The sensors are arranged on metallic masts with the height of 53 and 60 m above the ground. The periodicity of the information read-out from the sensors at all the height levels was 10 s. For storing information an NRG LOGGER Symphonie complex was employed, which has independent supply from batteries and is able to store information from nine sensors in the memory card during a year.

In the observation period a database has been built up containing the wind speed values at heights of 10, 20, 30, 40, 50 and 60 m, wind temperature and direction in two regions in the Latvian territory. At the present time, the database contains more than 3'000'000 records of measurements. To compare the wind energy flow levels on the sea shore in the Ventspils region and in the area remote from the sea in the Ainaži region, in Table 1 average wind speed values, V_a , are given, with standard deviations SD , and the wind energy density values, P_d , W/m^2 . Dark colour in the table corresponds to a larger value of wind speed or energy density for the month.

The charts of seasonal fluctuations of average wind speed V (m/s) for the measurement period T (a month) at the heights 20, 30, 40, 50 m in the Ventspils region and 10, 30, 50, 60 m in the Ainaži region are shown in Figs. 2 and 3. The results of wind speed measurements taken in the Ventspils and Ainaži regions are systematized and presented in the form of histogram in Figs. 4 and 5. The envelope of the histogram shows the wind speed V distribution in the

relative frequency of repetition F , which corresponds to the relation $F = \frac{T_V}{T} \cdot 100\%$, where T_V is the total duration of wind with the speed V in the whole measurement period T for the heights 20, 30, 40, 50 m in the Ventspils region and 10, 30, 50, 60 m in the Ainaži region.

Table 1. Distribution of average wind speed values with standard deviations and corresponding power density values at the height 50 (m) in the observation period.

Year	Month	Ventspils			Ainaži		
		V_a (m/s)	SD (m/s)	P_d (W/m ²)	V_a (m/s)	SD (m/s)	P_d (W/m ²)
2009	April	4.27	0.78	76.92	4.48	0.72	85.53
	May	4.82	0.97	93.59	4.58	0.81	93.10
	June	4.80	0.99	95.32	4.56	0.84	97.48
	July	4.28	0.83	77.96	3.87	0.65	57.99
	August	4.37	0.80	73.82	4.14	0.67	64.92
	September	5.04	1.03	113.19	4.61	0.74	83.86
	October	4.78	1.07	151.59	5.00	0.79	139.02
	November	4.97	1.12	103.52	4.73	0.79	84.99
	December	4.23	0.88	81.45	3.98	0.63	66.16
	2010	January	3.60	0.67	56.48	3.01	0.43
February		3.58	0.74	47.95	3.32	0.48	43.83
March		4.88	1.08	105.12	4.91	0.81	107.57
April		3.71	0.80	52.75	4.14	0.71	68.58
May		4.02	0.88	68.15	4.16	0.77	75.45
June		4.36	0.91	88.80	4.23	0.79	78.83
July		4.02	0.76	55.71	3.42	0.61	38.88
August		4.09	0.81	67.83	3.88	0.68	63.92
September		4.99	1.02	116.10	4.81	0.70	107.69
October		4.98	0.99	120.17	5.08	0.78	120.79
Average:		4.41	0.90	86.65	4.26	0.71	80.33

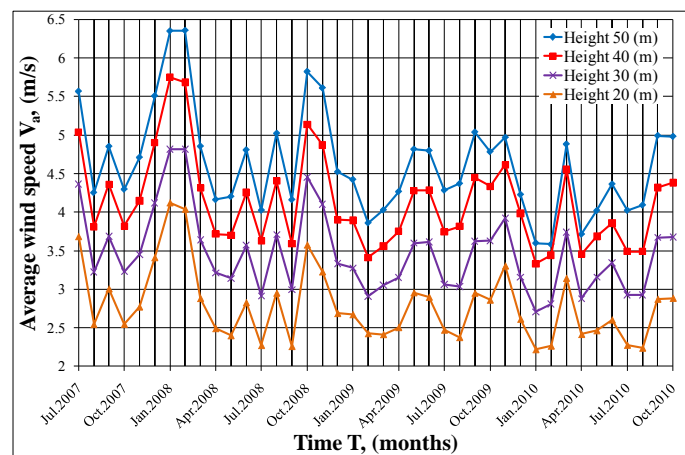


Fig. 2. Average wind speed values V_a in period T (2007/2010) at heights 10, 30, 40 and 50 (m) in the Ventspils region.

The histogram allows determination of the wind energy flow density, which is calculated by the equation:

$$P_d = \rho \frac{V_{a.c.}^3}{2} = \rho \frac{\sum_{n=0}^n V_n^3 F_n}{2 \cdot 100} \quad (1)$$

where $V_{a.c.}$ – is the average cubic wind speed, m/s,

$\rho = 1.23 \text{ kg/m}^3$ – is the air density at atmosphere pressure 101.325 kPa and temperature 15° C,

V_n – is the wind speed, m/s,

F_n – is the relative frequency of repetition, %, corresponding to wind speed V_n and determined by curves on the histograms of Figs. 4.

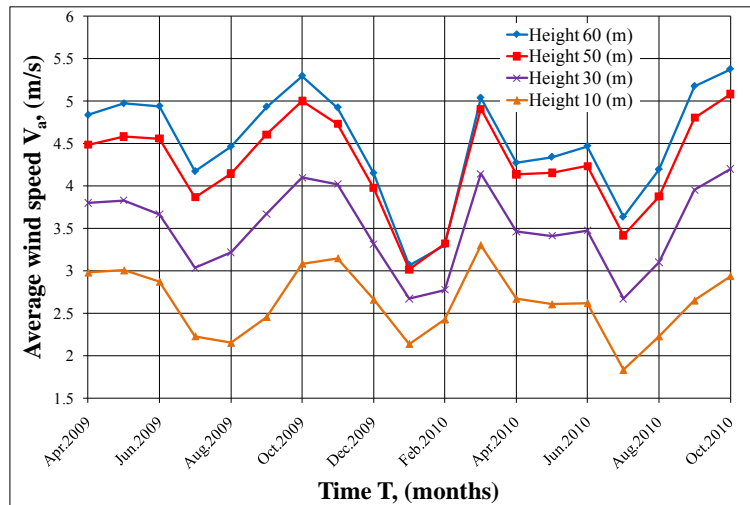


Fig.3. Average wind speed values V_a in period T (2009/2010) at heights 10, 30, 50 and 60 (m) in the Ainaži region.

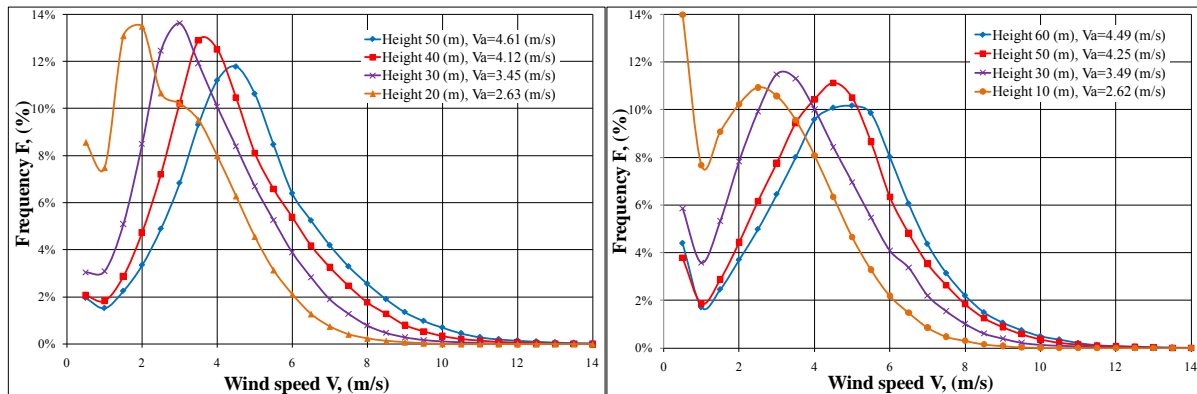


Fig. 4 (left). Distribution of wind speed in relative frequency of repetition $F=f(V)$ at heights 10, 30, 40 and 50 (m) in the Ventspils region and Fig. 4 (right). Distribution of wind speed in relative frequency of repetition $F=f(V)$ at heights 20, 30, 50 and 60 (m) in the Ainaži region.

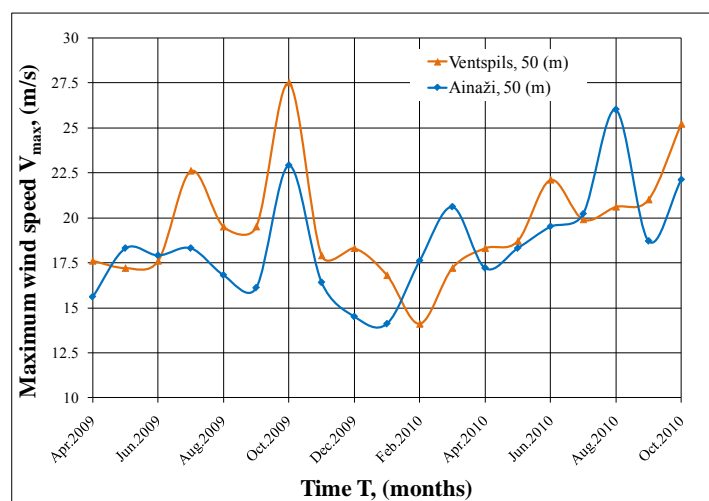


Fig.5. The maximum values of separate wind gusts, V (m/s), with duration 10 (s) in the regions Ventspils and Ainaži, at height 50 (m) above the ground level in the period of 2009/2010.

From analysis of statistical data for 2009/2010 shown in Fig. 5 it follows that in the coastal zone winds are gustier, whereas farther from shore their speeds are more uniform. The maximum value for separate wind gusts lasting not less than 10 s in the Ventspils region is not much higher than in Ainaži, with the situation changing in individual months. In January of 2005 the wind gusts in the Ventspils region at a height of 50 m reached 34.1 m/s.

3. Approximating functions for calculation of the wind speed and wind energy density up to 150 m

The distribution curves of the average wind speed V_a (m/s) in height h (m) above the ground level in the regions Ventspils and Ainaži obtained based on the data accumulated for a long time are presented in Fig. 6. The measured values of wind speed in the Ventspils region are shown by two curves. Curve 1 corresponds to the average wind speed values in the period of 2007/2010, curve 2 – to the average wind speed values in the period of 2009/2010, and curve 3 – to the distribution of the average wind speed in the Ainaži region in the period of 2009/2010.

Analysis of the distribution curves in Fig.6 obtained for the average wind speed V_a shows that the wind speed distribution in height up to 30 m is to a considerable extent determined by the topography of the terrain. In the Ventspils region it is represented by 8 - 10 m high tract of forest, whereas in the Ainaži region – an open plain remote from the sea. The points on the curves corresponding to the measured values of wind speed at a height over 30 m could be well approximated by the exponential function of the form:

$$V_a = kh^\alpha, \quad (2)$$

For the curves of Fig. 7 the following values for approximating functions have been obtained:

For curve 1 – $V_a = 1.19 h^{0.37}$, the coefficient of determination $R^2 = 0.9941$;

For curve 2 – $V_a = 1.11 h^{0.37}$, the coefficient of determination $R^2 = 0.9937$;

For curve 3 – $V_a = 1.02 h^{0.37}$, the coefficient of determination $R^2 = 0.9977$,

hereafter R^2 – reveals how close is modelled approximation function to actual measured values, most reliable when is at or near 1.

Fig. 7 shows curves 1, 2, 3 for measured values of the average wind speed V_a (m/s), calculated using the corresponding values of approximating functions and extrapolated up to the height h of 150 m. From analysis of the distribution of the average cubic wind speed depending on the height above the surface $V_{a.c.} = f(h)$ for curves 1, 2, 3 the following coefficients and exponents have been obtained for approximating function in Eq. (2):

For curve 1 – $V_{a.c.} = 1.69 h^{0.31}$, the coefficient of determination $R^2 = 0.9877$;

For curve 2 – $V_{a.c.} = 1.61 h^{0.31}$, the coefficient of determination $R^2 = 0.9883$;

For curve 3 – $V_{a.c.} = 1.59 h^{0.29}$, the coefficient of determination $R^2 = 0.9994$.

With due regard for the relationship in Eq. (1) the distribution curves for the average cubic wind speed values in height $V_{a.c.} = f(h)$ are calculated up to the height of 150 m and are presented in Fig. 8 (left). Correspondingly, the distribution curves for the wind energy density $P_d = f(h)$ are presented in Fig. 8 (right). For calculation of the wind energy density in the coastal area and in the regions remote from the coast by 30 - 40 km the following functions have been used:

For curve 1 – $P_d = 3.17 h^{0.93}$ the coefficient of determination $R^2 = 0.9874$;

For curve 2 – $P_d = 2.64 h^{0.94}$, the coefficient of determination $R^2 = 0.9882$;

For curve 3 – $P_d = 2.57 h^{0.88}$, the coefficient of determination $R^2 = 0.9995$.

For flat territories typical of the Baltic countries the approximating function Eq. (2) could be reduced to the form more convenient for the use as shown in the Eq. (3) & Eq. (4):

$$V_{a,h} = V_{a,h_1} \left(\frac{h}{h_1} \right)^\alpha, \quad (3)$$

$$V_{a,h} = V_{a,h_1} \left(\frac{h-h_0}{h_1-h_0} \right)^\alpha \quad (4)$$

where $V_{a,h}$ – is the calculated value of the average wind speed (m/s) at height h , (m);

V_{a,h_1} – is the measured value of the average wind speed (m/s) at height h_1 , (m) for a flat area;

h_0 – is the height of the surface relief at the installation point of the measuring set,

α – is the approximation coefficient (depending on the remoteness from the sea shore is 0.37 – 0.31).

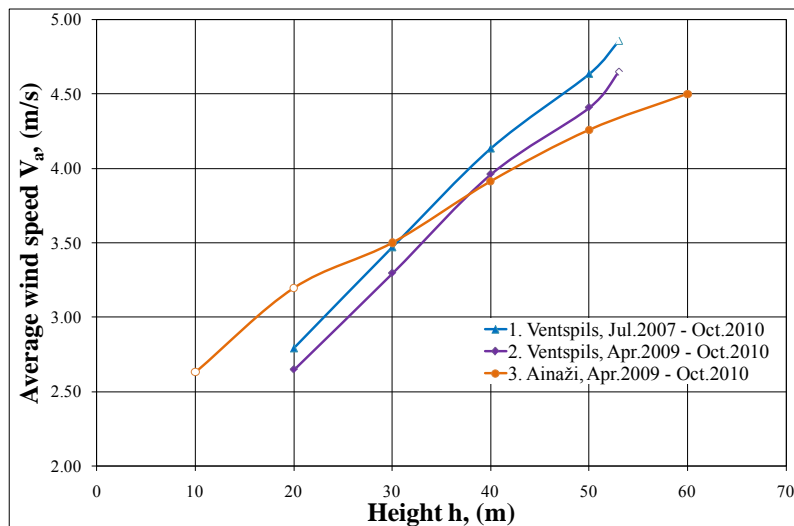


Fig. 6. The curves of the average wind speed vs. height $V_a = f(h)$ in the Ventspils and Ainaži regions obtained by measurements.

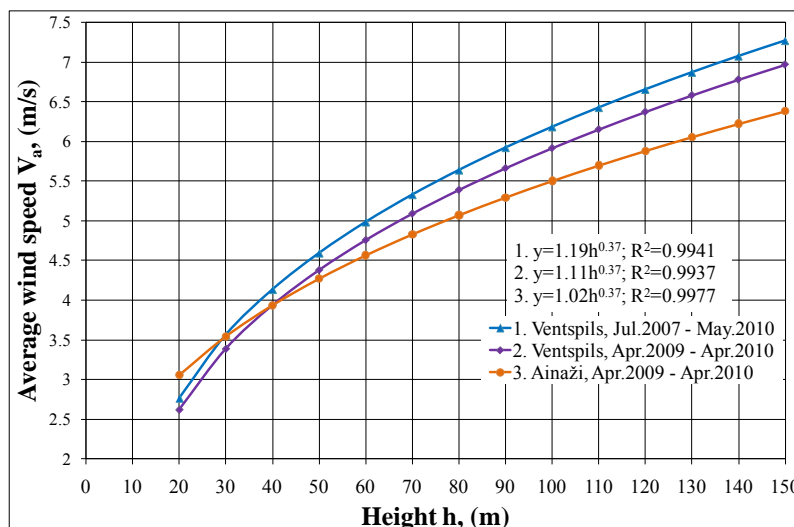


Fig. 7. The curves of the average wind speed vs. height $V_a = f(h)$ in the Ventspils and Ainaži regions extrapolated up to the height of 150 (m).

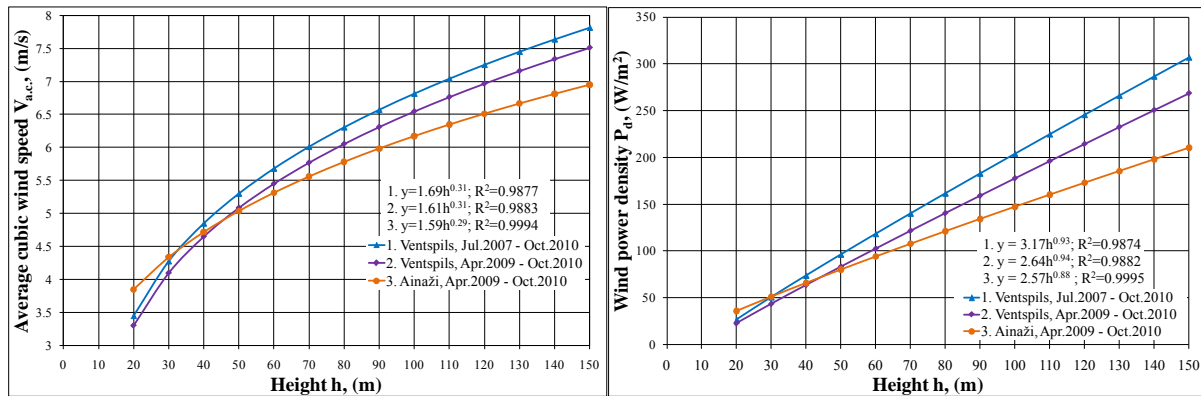


Fig. 8 (left). The curves of the average cubic wind speed vs. height $V_{a.c.} = f(h)$ in the Ventspils and Ainaži regions extrapolated up to the height of 150 (m). Fig. 8 (right). The curves of the wind energy density vs. height $P_d = f(h)$ in the Ventspils and Ainaži regions extrapolated up to the height of 150 (m).

4. Estimation of the acoustic noise level distribution around a WPP

One of the negative aspects of WPP operation is emission of low-frequency noise that acts on humans and disturb comfortable life conditions. Calculations allow to define a zone of noise influence on environment and to determine if the planned projects are in accordance with requirements of the Law of Republic of Latvia, which establishes acceptance standards of noise level in populated areas. In compliance with the sanitary norms in Latvia the noise level accepted at the places of permanent residence of people must not exceed 40 dB(A). This means that the construction of WPPs in the proximity of settlements is not allowed.

Fig. 9. The map of noise level distribution around a WPP consisting of 32 generators with the total power of 80.0 (MW) in the territory 8000x5000 (m).

Figure 9 shows the map of noise level distribution in the territory surrounding a WPP consisting of 32 generators with the total power of 80.0 MW in the Ainaži region. The maximum value of the noise level in the WPP territory is 50.14 dB(A), the noise level of a generator being 99.0 dB(A) [3].

5. Conclusions

1. Availability of large unpopulated areas on the coasts of the Baltic countries, along with the developed infrastructure of electric power networks, makes attractive the use of these lands for siting large wind power plants (WPPs).
2. During long-term observations a statistical database has been accumulated on the distribution of speeds and directions of winds at different heights: 10, 20, 30, 40, 50 and 60 m in the Ventspils and Ainaži regions on the Baltic Sea shore.
3. The graphs of seasonal fluctuations of wind speed have been obtained for the heights up to 60 m by measurements over the period of 2007 - 2010.
4. The histograms have been composed for the relative frequency of repetition of wind speed over the period of 2007 - 2010.
5. The values of approximating functions have been obtained allowing for the calculations of the wind speed at a height up to 150 m above the ground level in coastal zones of the Baltic Sea and in a territory remote from the sea by 35 km.
6. The wind speed measurements are noticeably affected by the terrain features, therefore to raise the precision at determination of approximating functions it is worthwhile to dispose the measuring sensors at a height over 30 m above the surface level.
7. During the period of observations it has been revealed that in 2009 the average yearly wind speed on the Baltic Sea shore decreased 5% with respect to 2007. To compose the atlas of the wind energy resources it is necessary to investigate the period of cyclic yearly fluctuations of the wind speed.
8. The maximum values obtained for separate wind gusts lasting not less than 10 s are not much higher in the Ventspils region than in Ainaži. In January 2005 the wind gusts at a height of 50 m in the Ventspils region reached 34.1 m/s.
9. In the places of WPP location the level of acoustic noise can be higher than 50.14 dB(A), while in compliance with the sanitary norms the noise level allowable for residential areas must not exceed 40 dB(A).

References

- [1] V. Bezrukov, V. Pugachov, P. Shipkovs, G. Kashkarova, Vl. Bezrukovs „Investigation of the wind energy potential in the Baltic region”. SCW2005, ISES Solar World Congress, August 6 – 12, Orlando, US, - 6 pp.
- [2] P. Shipkovs, V. Bezrukov, V. Pugachev, Vl. Bezrukovs, V. Silutins, Research of the wind energy resource distribution in the Baltic region, World Renewable Energy Congress XI 23-30 September 2010, Abu Dhabi, UEA, pp.1931 – 1936.
- [3] P. Shipkovs, V. Bezrukov, Vl. Pugachov, Vl. Bezrukovs, S. Orlova „Measurements and utilization of wind energy on the Baltic Sea coast”. The 10th World Renewable Energy Congress – WREC X, 19-25 July, 2008, Glasgow, Scotland, CD proceedings 2398 – 2403.